



☎ : 405-205-7942 OK or 316-573-9799 KS
✉ : sales@wirelessmonitoringsolutions.net
🌐 : www.wirelessmonitoringsolutions.net



GSPS130

Satellite GPS Fleet Tracking System

Overview:

Status updates are automatically sent by the GSPS130 to the mapping system as needed to help your company know the exact location and operating status of every monitored asset using a simple, graphical user interface that updates continuously.

Full GeoFencing support enabled with a single mouse click will inform interested personnel if any equipment moves unexpectedly or without authorization.

Proactive service reminders and alerts automatically generated and sent as equipment nears or reaches service intervals based on run-time and/or miles traveled. Service logs and manuals available over the secure web portal reducing paperwork and automatically keeping perfect, up to the minute service records for all monitored equipment.

Equipment faults or emergency conditions immediately trigger alarms sent to all interested personnel within your organization via SMS text messages, BlackBerry, PDA, and/or email alerts.

Features:

Easy to install GPS tracking system with combination GPS and satellite antenna in one 7.5" tall, magnet mount package. Wiring features quick disconnect wiring harness.

Low standby power consumption allows constant monitoring of idle equipment for extended periods of time.

Digital inputs allow monitoring and reporting of multiple status and fault conditions. Analog input allows monitoring and constant logging of tank levels, pressures, or temperatures.

No software to buy or maintain, all mapping and data accessible over a secure web portal.

Technical Specifications:

Size	8.1" x 3.4" x 1.5" in.	Power	9 - 30 Volts
Radio	LEO Satellite, VHF 148-150.05 MHz (Tx) 137 to 138 MHz (Rx)	Current Consumption	Idle, 12 V 25 mA Transmit, Average 1.3 A Peak 2.0 A
Transmit Power	148 - 150.05 MHz 10 Watts EIRP	Temperature	Operating -40°C to +85°C
Digital Inputs	4	Shock & Vibration	SAE J1455
Analog Inputs	4, 0 to 3 Volts, 10 bit	Pressure Wash	MIL 506.1
IO + Power Connector	Delphi Packard 36 pin (included)		
VHF Connector	FARKA SMB D Code		
GPS Connector	FARKA SMB C Code		

Country Approvals:

Argentina	Ireland	Poland
Australia	Iraq	Romania
Belgium	Italy	Slovak Rep.
Brazil	Japan	South Africa
Canada	Kazakhstan	Spain
Chile	Korea	Sweden
*China (soon)	Malaysia	Switzerland
Colombia	Morocco	Turkey
Congo	Netherlands	UK
Czech Rep.	Norway	Ukraine
Denmark	Panama	United States
France	Paraguay	Uruguay
Germany	Peru	Venezuela
Iceland	Philippines	

Each Complete Tracking Kit Includes:



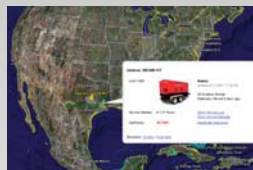
Satellite GPS Tracking Modem:

- 4 Digital Inputs
- 4 Analog Inputs
- 4 Digital Outputs
- GeoFencing
- 12 or 24 Volt Systems



Combo Satellite + GPS Antenna:

- Low profile
- Small, 7.5" total height
- 15' Cable Length
- Magnet Mount



Mapping, Tacking & Reporting:

- Web Accessible
- Graphical Map Overview
- Simple User Interface
- Run Service Reports
- Query Device Locations
- Monitor Equipment Use



Alarming & Notifications:

- Equipment Status Change
- Equipment Service Needed
- Equipment Location Update
- GeoFence Violation
- SMS Text Message
- BlackBerry, PDA Message
- Email